



## RESEARCH ARTICLE

# A comparative-descriptive analysis of clinical characteristics in 2019-coronavirus-infected children and adults

Ya-nan Han<sup>1</sup> | Zhan-wei Feng<sup>2</sup> | Li-na Sun<sup>1</sup> | Xiao-xia Ren<sup>1</sup> | Hua Wang<sup>1</sup> |  
Yong-ming Xue<sup>3</sup> | Yi Wang<sup>4</sup> | Ying Fang<sup>1</sup>

<sup>1</sup>Department of Gastroenterology, Xi'an Children's Hospital, Xi'an, China

<sup>2</sup>Department of Respiratory Medicine, Xi'an Children's Hospital, Xi'an, China

<sup>3</sup>Department of Radiology, Xi'an Eighth Hospital, Xi'an, China

<sup>4</sup>Department of NICU, Xi'an Children's Hospital, Xi'an, China

## Correspondence

Yi Wang, Department of NICU, Xi'an Children's Hospital, 710003 Xi'an, China.

Email: [wangyichengxian@163.com](mailto:wangyichengxian@163.com)

Ying Fang, Department of Gastroenterology, Xi'an Children's Hospital, 710003 Xi'an, China.  
Email: [970910576@qq.com](mailto:970910576@qq.com)

## Abstract

Acute respiratory disease caused by 2019 novel coronavirus (2019-nCoV) has rapidly spread throughout China. Children and adults show a different clinical course. The purpose of the current study is to comparatively analyze the clinical characteristics of 2019-nCoV infection in children and adults and to explore the possible causes for the discrepancies present. The medical records of 25 adults and 7 children confirmed cases of 2019-2019-nCoV acute respiratory diseases were reviewed retrospectively. All children were family clusters. The total adult patients were differentiated into the local residents of Wuhan, a history of travel to Wuhan and direct contact with people from Wuhan. The numbers were 14 (56%), 10 (40%), and 1 (4%), respectively. The median incubation period of children and adults was 5 days (ranged, 3-12 days) and 4 days (ranged, 2-12 days), respectively. Diarrhoea and/or vomiting (57.1%) were demic by World Health Organiza more common in children, whereas for adults it was myalgia or fatigue (52%). On admission, the percentage of children having pneumonia (5%, 71.4%) was roughly the same as adults (20%, 80%). A total of 20% of adults had leucopenia, but leukocytosis was more frequently in children (28.6%,  $P=.014$ ). A higher number of children had elevated creatine kinase isoenzyme (57.1% vs 4%,  $P=.004$ ). Antiviral therapy was given to all adult patients but to none of the children. In summary, knowledge of these differences between children and adults will not only be helpful for the clinical diagnosis of 2019-nCoV disease, but also for a future discussion on age-specific coronavirus infection.

## KEYWORDS

2019 novel coronavirus, clinical manifestations, comparative analysis, differences between children and adults, laboratory parameters

## 1 | INTRODUCTION

In December 2019, pneumonia associated with the 2019 novel coronavirus (2019-nCoV) emerged in Wuhan, China, and has spread rapidly around the world.<sup>1,2</sup> Previous studies indicated that at the

whole-genome level, the 2019-nCoV is 96% identical to a bat coronavirus, which resembled severe acute respiratory syndrome (SARS) and Middle East respiratory syndrome (MERS) Coronavirus.<sup>3,4</sup> People of all ages are susceptible to 2019-nCoV infection, which is declared as a pandemic by World Health Organization.<sup>5</sup> As of

28 February 2020, a total of 79 251 cases have been reported in China, which includes more than 400 children.<sup>6-8</sup> Among the confirmed children, the reported minimum age is 30 hours and the maximum age is 17 years old. It includes critical cases with early neonatal infection.<sup>9</sup> Even though the pediatric patients account for a lower proportion (0.35%, below 10 years old),<sup>10</sup> we should give importance to early diagnosis and treatment.

To our knowledge, many studies have been conducted to describe the clinical manifestations in children and adults. Nevertheless, no study is available that compares the clinical features of children with confirmed 2019-nCoV infection to those of infected adults. In this regard, the purpose of our retrospective study is to analyze the clinical manifestations of confirmed n-CoV infection in children and adults. Furthermore, we compared all the parameters between these two groups, which will assist the practitioners to explore the possible causes of the discrepant aspects and lead to an accurate diagnosis and efficient treatment.

## 2 | METHODS

### 2.1 | Patients

We retrospectively reviewed records of 32 cases confirmed with 2019-nCoV acute respiratory disease (2019-nCoV ARD), who were managed at Xian eighth hospital (Shaanxi, China) from 31st January to 16th February 2020. Cases were confirmed by clinical and epidemiological evidence, and approximately 93.8% (30/32) of them were also laboratory-confirmed. Diagnosis and the severity of 2019-nCoV ARD was defined according to National Recommendations for Diagnosis and Treatment of pneumonia caused by 2019-nCoV (5th edition)<sup>11</sup>. Patients less than 18 years were grouped as children/pediatric patients, while those  $\geq 18$  years as adults. Written informed consent was obtained from all participants enrolled in the study, including children under 18 years old, whose consent was provided by their parents or guardians.

### 2.2 | Data collection

Clinical data including epidemiological, demographical, clinical symptoms, laboratory measurements, imaging findings, management, and outcome were recorded. The incubation period is the duration from the exposure of the pathogen to the onset of symptoms. All patients underwent imaging examination on admission. Discharge criteria includes body temperature returning to normal for a minimum of 3 days, significant improvement in respiratory symptoms and completion of two consecutive negative tests of respiratory pathogenic nucleic acid (sampling interval of at least 1 day).<sup>12</sup>

Throat swab specimens from the upper respiratory tract were collected from all patients at admission and stored in a viral transport medium. The presence of 2019-nCoV virus nucleic acid was detected using real-time reverse transcription-polymerase chain reaction through the Shaanxi Center for Disease Control and Prevention.

## 2.3 | Statistical analysis

All statistical data were processed using IBM SPSS 19.0 statistical software. Continuous variables were expressed as the means and standard deviations or medians and range (min to max) as appropriate. *t* test or Wilcoxon rank-sum tests were applied to continuous variables, while  $\chi^2$  tests or Fisher's exact tests were used to compare categorical variable as appropriate.  $P < .05$  was considered statistically significant.

## 3 | RESULTS

### 3.1 | Baseline characteristics

A total of 32 cases with 2019nCoV infection were reported in this study, including 7 children and 25 adults. The children group (below 18 years old) comprised three girls and four boys, with the mean age of 1.3 years (ranged, 2 months-13 years). The adult group included 12 men and 13 women, with the mean age of 44 years (ranged, 22-70 years).

As shown in Table 1, there was no significant difference in gender distribution between the two groups. All children were family clusters or had a clear history of close contact with 2019-nCoV-confirmed patients. In adult patients, 14 (56%) patients were local residents of Wuhan, 10 (40%) patients recently travelled to Wuhan, and only 1 (4%) patient had a close contact with individuals from Wuhan. None of the patients had a history of contact with wildlife. The median incubation period of children and adult was 5 days (ranged, 3-12 days) and 4 days (ranged, 2-12 days), respectively; which indicated no statistical significance ( $P = .408$ ). Altogether 10 adult patients had an underlying comorbidity; especially diabetes (9%, 36%) and hypertension (7%, 28%), which was absent in pediatric population.

### 3.2 | Clinical manifestation

The main symptoms found in our study group were fever ( $\geq 37.3^\circ\text{C}$ ) and cough, followed by shortness of breath and myalgia or fatigue. Diarrhoea, vomiting, and pharyngalgia were also recorded (Table 1). Furthermore, it is worth mentioning that children suffered more frequently from diarrhoea and/or vomiting with a statistically significant difference (57.1% vs 8%,  $P = .012$ ), whereas in adults myalgia or fatigue were observed more frequently with no significant difference (52% vs 0,  $P = .25$ ). There was no difference in upper limit of body temperature between the two groups ( $38.24 \pm 1.10^\circ\text{C}$  vs  $38.18 \pm 0.62$ ,  $P = .958$ ). The median duration of fever was 1 day (ranged, 0-3 days) in the pediatric group, and 4 days (ranged, 1-10 days) in the adult group ( $P = .011$ ).

### 3.3 | Radiological and laboratory findings

A number of 71.4% of children and 80% of adults showed positive findings suggestive of pneumonia, on chest X-ray and computed

**TABLE 1** Baseline characteristics and clinical manifestation of patients infected with 2019-nCoV

	Children (n = 7)	Adults (n = 25)	P
Characteristics	...	...	...
Age, y	1.3 (0.2-13)	44 (22-70)	...
Sex (n,%)	...	...	...
Men	4 (57.1%)	12 (48%)	...
Female	3 (42.9%)	13 (52%)	...
Exposure history (n,%)	...	...	...
Local residents of Wuhan	0	14 (56%)	...
Recently been to Wuhan	0	10 (40%)	...
Contacted with people from Wuhan	7 (100%)	1 (4%)	...
Incubation period, d	5 (3-12)	4 (2-12)	.408
Comorbidity (n,%)	0	10 (40%)	...
Diabetes	0	9 (36%)	...
Hypertension	0	7 (28%)	...
Other	0	0	...
Symptoms	...	...	...
Fever (n, %)	5 (71.4%)	24 (96%)	.113
Cough (n, %)	5 (71.4%)	19 (76%)	1
Myalgia or fatigue (n, %)	0	13 (52%)	0.25
Diarrhoea and/or vomiting (n, %)	4 (57.1%)	2 (8%)	<b>.012</b>
Shortness of breath (n, %)	3 (42.9%)	10 (40%)	1
Pharyngalgia (n, %)	1 (14.3%)	6 (24%)	1
Highest body temperature, °C	38.24 ± 1.10	38.18 ± 0.62	.958
Duration of fever, d	1 (0-3)	4(1-10)	<b>.011</b>

Note: Data are presented as medians (ranges, Min to Max) or Mean ± SD and n/N (%). P values comparing the children (<18 y) and the adults (≥18 y) group from  $\chi^2$  test, Fisher's exact test, t test. Bold values denote statistical significance at the  $P < .05$  level.

Abbreviation: nCoV, novel coronavirus.

tomography (Table 2). The two groups shared a multitude of common imaging findings including ground-glass opacity and segmental consolidation in bilateral lung fields, especially in the peripheral zones. Figure 1 demonstrates the radiological findings in pediatric and adult patients with 2019-nCoV ARD. It showed no prominent differences in severity of radiologic abnormalities. However, 28.6% of the affected children and 20% of adult cases did not have any significant radiological findings ( $P = .632$ ). Diagnostic confirmation in such cases was done on the basis of clinical findings and positive reverse transcription polymerase chain reaction results.

The analysis of laboratory parameters revealed leucopenia (leucocyte count <3500/mL) as a common finding among adults (20%) while leukocytosis being more frequent in children (28.6%) ( $P = .014$ ) (Table 2). Laboratory reports showed thrombocytopenia in 8% (2 adults) of the adult patients and thrombocytosis in another 8% adults. In children, the corresponding values were 0% and, 14.3% respectively. Hypoalbuminemia was observed in 18 patients and different degrees of renal

function damage was revealed in 20 cases, all of whom were from the adult group ( $P = .001$  and  $.025$ , respectively). Moreover, four children and six adult patients had differing degrees of liver function abnormality, with increased alanine aminotransferase or aspartate aminotransferase. Most of the children had elevated creatine kinase isoenzyme compared to adults ( $P = .004$ ). All other myocardial damage indexes such as lactate dehydrogenase, myoglobin and brain natriuretic peptide showed no distinct difference in two groups. More adults suffered from coagulation disorder (child/adult, 71.4% vs 88%;  $P = .296$ ), especially increased activated partial thromboplastin time (APTT,  $P = .003$ ) and fibrinogen ( $P = .049$ ). Regarding the infection-related biomarkers, erythrocyte sedimentation rate (ESR, child/adult: 42.9% vs 84%,  $P = .047$ ) and procalcitonin (PCT, child/adult: 42.9% vs 0,  $P = .007$ ) were elevated prominently in adult and children, respectively (Table 3).

All patients were tested for common respiratory pathogens, including the nucleic acid of influenza viruses A and B, but all of them were negative.

### 3.4 | Clinical classification, treatment, and outcome

All children were diagnosed with mild infection, without any severe symptoms or complication. They recovered within 1 to 2 weeks with prompt symptomatic treatment. Two children developed shortness of breath and received oxygen therapy; an infant had bilateral pneumonia for which low-dose glucocorticoids were injected intravenously to prevent the progression. In adult group, four patients suffered from severe pneumonia; while in others mild severity was noticed. Similarly, 12 of the adult patients required oxygen inhalation. Antiviral therapy was given to all adult patients but to none of the children. In the adult group, empirical antibiotic treatment was initiated in eight cases at the same time. No death was reported in either group, and the rate of discharge from the hospital was 100%.

## 4 | DISCUSSION

Since the beginning of 2019nCoV pandemic, the infection rate of children is relatively lower. The previous published data reports the age group of 30 to 69 years old accounting for 77.8% of the entire case load; our study further confirms the fact that n-CoV affects primarily the adults.<sup>8</sup> Similar characteristics have been reported in the infection of SARS-related coronavirus and MERS coronavirus. A previous study concludes that lower risk of exposure, incomplete diagnosis, presence of mild symptoms or asymptomatic disease in the unaffected age group, may be a reason for one particular age group appearing to be more susceptible. The presence of resistance to infection by the unaffected age group is out of question.<sup>13</sup> Our study shows that the presentation of symptoms in all of the seven children started after a confirmed diagnosis in one of the family members, whereas in adults the routes of infection were diverse. Another reason for children appearing to be protected is the presence of comorbidities like diabetes, hypertension, coronary artery disease

**TABLE 2** Radiographic and laboratory findings of patients infected with 2019-nCoV on admission to hospital

	Children (n = 7)	Adults (n = 25)	P	Normal range
Chest X-ray and CT findings		...	...	...
No signs of pneumonia	2 (28.6%)	5 (20%)	.632	...
Pneumonia	5 (71.4%)	20 (80%)		...
Blood routine	...	...	...	...
Leucocytes ( $\times 10^9/L$ )	...	...	...	...
Increased	2 (28.6%)	0	.014	Child/Adult:3.5-9.5
Decreased	0	5 (20%)		
Neutrophils ( $\times 10^9/L$ )	...	...	...	...
Increased	1 (14.3%)	2 (8%)	.536	Child:2-7 Adult:1.8-6.3
Lymphocytes ( $\times 10^9/L$ )	...	...	...	...
Decreased	0	9 (36%)	.149	Child:0.8-4 Adult:1.1-3.2
Platelets ( $\times 10^9/L$ )	...	...	...	...
Increased	1 (14.3%)	2 (8%)	.673	Child:100-350 Adult:125-350
Decreased	0	2 (8%)		
Blood biochemistry	...	...	...	...
Albumin (g/L)	...	...	...	...
Decreased	0	18 (72%)	.001	Child:37-51 Adult:40-55
ALT(U/L)	...	...	...	...
Increased	1 (14.3%)	4 (16%)	1	Child:0-37 Adult:9-50
Aspartate aminotransferase(U/L)	...	...	...	...
Increased	3 (42.9%)	5 (20%)	.327	Child:10-50 Adult:15-40
Total bilirubin ( $\mu\text{mol/L}$ )	...	...	...	...
Increased	1 (14.3%)	7 (28%)	.646	Child:17.1-34.2 Adult:3.4-17.1
Blood urea nitrogen (mmol/L)	...	...	...	...
Increased	0	0	.025	Child:1.8-6 Adult:3.6-9.5
Decreased	0	13 (52%)		
Serum creatinine ( $\mu\text{mol/L}$ )	...	...	...	...
Increased	0	0	.066	Child:18-52 Adult:57-111
Decreased	0	11 (44%)		
Creatine kinase isoenzyme (U/L)	...	...	...	...
Increased	4 (57.1%)	1 (4%)	.004	Child:0-30 Adult:0-24
Lactate dehydrogenase (U/L)	...	...	...	...
Increased	2 (28.6%)	1 (4%)	.113	Child:155-395 Adult:120-250
Myoglobin (ng/mL)	...	...	...	...
Increased	2 (28.6%)	1 (4%)	.113	Child: 10-45, Adult: 0-146.9
Brain natriuretic peptide (pg/mL)	...	...	...	...
Increased	5 (71.4%)	10 (40%)	.209	Child/Adult: 0-125
Coagulation function	...	...	...	...
Activated partial thromboplastin time (s)	...	...	...	...
Increased	3 (42.9%)	0	.003	Child: 24-38, Adult: 28-43.5
Decreased	3 (42.9%)	18 (72%)		
Fibrinogen (s)	...	...	...	...
Increased	0	8 (32%)	.049	Child/Adult: 2.0-4.0
Decreased	1 (14.3%)	0		
D-dimer ( $\mu\text{g/L}$ )	...	...	...	...
Increased	2 (28.6%)	7 (28%)	1	Child/Adult: 0-1.0
Infection-related biomarkers	...	...	...	...
Erythrocyte sedimentation rate (mm/h)	...	...	...	...
Increased	3 (42.9%)	21 (84%)	.047	Child/Adult: 0-15.0

**TABLE 2** (Continued)

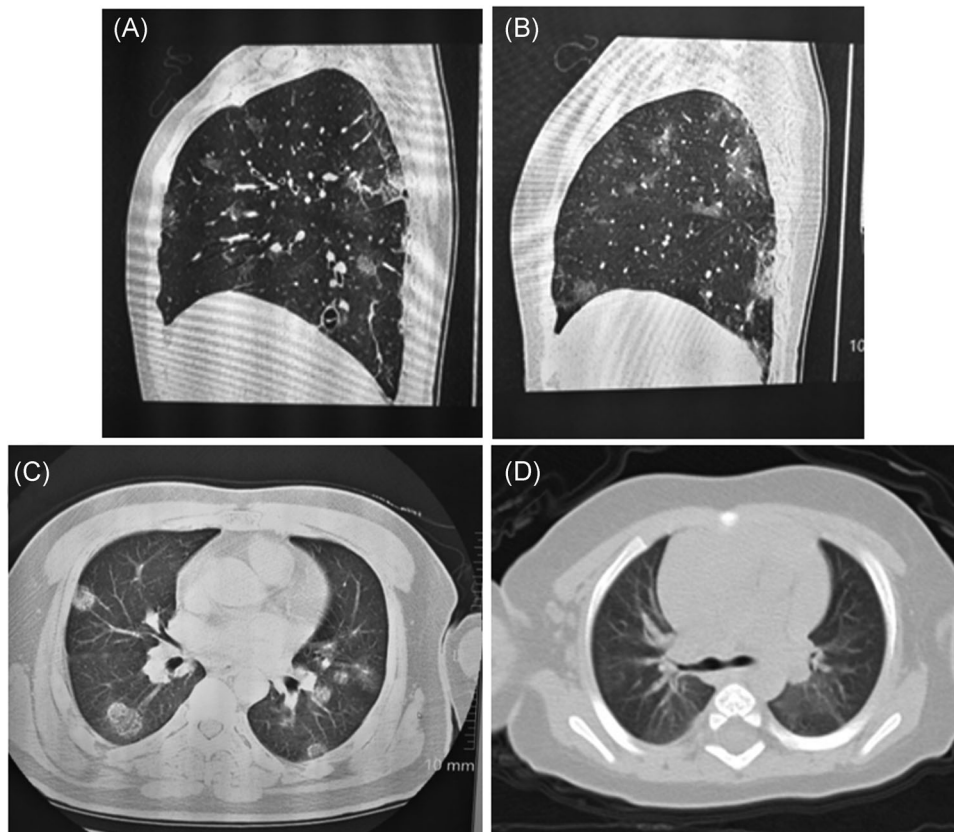
	Children (n = 7)	Adults (n = 25)	P	Normal range
C-reactive protein (mg/L)	...	...	...	...
Increased	2 (28.6%)	11 (44%)	.671	Child/Adult: 0-10.0
Procalcitonin (ng/L)	...	...	...	...
Increased	3 (42.9%)	0	<b>.007</b>	Child/Adult: 0-0.5

Note: P values denoted the comparison between children cases and adult cases. Bold values denote statistical significance at the  $P < .05$  level. Abbreviation: CT, computed tomography.

etc, in more than 50% of the adults affected with n-CoV, which makes adult population more susceptible to the n-Coronavirus infection.<sup>14,15</sup>

Consistent with recent publications,<sup>1,10,13-17</sup> fever and cough were the dominant symptoms in both children and adults. It was noted that adult patients rarely developed intestinal signs and symptoms (eg diarrhoea and/or vomiting), whereas about 57.1% of children patients had diarrhoea. Another study, at prestigious Wuhan hospital, focusing on the gastrointestinal symptoms of n-CoV pneumonia, demonstrated that 49.5% of patients had diarrhoea.<sup>18</sup> A longer observation period in following hospitalization may increase

the ratio of gastrointestinal symptoms and demonstrate a different result, whereas in our study those were observed at an early time point. Zhou et al found that 2019 n-CoV uses the same cell entry receptor, angiotensin convertase enzyme (ACE2), as SARS-CoV<sup>3</sup>. ACE2 is not only expressed in respiratory organs, but also in the digestive system.<sup>19</sup> Some scholars speculate that 2019-nCoV may interact with ACE2 receptor in gastrointestinal tract, impair the intestinal mucous membrane barrier and increase the inflammatory cytokines production.<sup>20</sup> Therefore, whether a higher rate of gastrointestinal symptoms in children group is related to higher expression of ACE2 in gastrointestinal tract or different functions of ACE2



**FIGURE 1** Representative images of the thoracic X-ray and CT scans showing multifocal patchy ground-glass opacities in the lung. A-C, from a 64 years old female, who was diagnosed with severe pneumonia with the main symptoms of fever, cough and shortness of breath. D, shows mild pneumonia of a 1 year and 4 months old girl, who had fever, cough, and diarrhoea on admission and was diagnosed as mild type. CT scans, computed tomography scans

**TABLE 3** Clinical classifications, treatment, and outcomes of patients with 2019-nCoV ARD

	Children (n = 7)	Adults (n = 25)
Clinical classifications	...	...
Mild type <sup>a</sup>	7 (100%)	21 (84%)
Severe pneumonia	0	4 (16%)
Critical cases	0	0
Treatment	...	...
Oxygen therapy	2 (28.6%)	12 (48%)
Antibiotic treatment	0	8 (32%)
Antiviral treatment	0	25 (100%)
Glucocorticoids	1 (14.3%)	0
Clinical outcome	...	...
Discharge from hospital	7 (100%)	25 (100%)

Abbreviation: nCoV ARD, novel coronavirus acute respiratory disease.

<sup>a</sup>This type of patient includes those with asymptomatic infection, upper respiratory infection and mild pneumonia.

remains to be confirmed by further research. Similarly, duration of fever in adult was longer than children. This was due, at least in part, to differences in immune responses, especially specific immune response. Adults seemed more susceptible to a harmful immune response.

In laboratory tests, we found that children had different laboratory parameters than adults. It was observed that white blood count was frequently elevated among children contrary to adults, majority of which showed leucopenia. The recent report on the absolute value of lymphocytes showed either normal or reduced numbers in majority of the adults.<sup>14,16</sup> It may be due to dissimilar immune response of different individuals to n-CoV. We also observed that abnormal coagulation function, hypoalbuminemia, and hypouricemia were more common in adult patients which might be associated with presence of underlying disease in the adults. Myocardial zymography revealed, elevated levels of creatine kinase isoenzyme, higher in children than in adults. This may be explained by intense chills associated with high fever or by the higher incidence of myocardial damage in children.

As 2019-nCoV is an emerging virus, there are currently no effective vaccines or antiviral drugs. Experts consensus (the fourth edition) listed IFN- $\alpha$  nebulization as a treatment of choice for 2019-nCoV pneumonia.<sup>21</sup> The combination of Lopinavir and Ritonavir is another recommended antiviral regimen.<sup>11</sup> Lopinavir and Ritonavir are anti-human immunodeficiency virus (HIV) protease inhibitor, which are also used to treat HIV-1 in adults and children above 14 days of age.<sup>22</sup> That fewer adverse clinical outcomes were reported among SARS-CoV patients revealed that lopinavir/ritonavir benefited the patients in clinical practice substantially.<sup>23</sup> None of the 32 patients required intensive care or mechanical ventilation or had any severe complications. Because of the limited number of subjects in this study, it is difficult to compare the clinical outcomes related to treatment between the two groups. More effort should be made to elaborate on this issue in future research.

The limitation of this study is its small sample size. In addition, the sampling site to detect viral nucleic acid sequences was limited, which could lead to false positive or false negative into the study. Research recommends strict medical quarantine and observation for all patients with suspected disease until the results of nucleic acid amplification tests from throat swabs, sputum, and even lung lavage are obtained.<sup>24,25</sup> In our study, diagnosis relies on the integration of epidemiology, clinical manifestations, laboratory and radiographic examinations, and viral nucleic acid detection, as such, we believe that the physician reported diagnosis is credible. Finally, the 2019-nCoV evaluation was qualitative so that quantitative virus titer was not obtained to provide more information to compared the difference between the children and adults in details.

In conclusion, our multi-dimensional study demonstrates that children with 2019-nCoV infection present a clinical picture which is often distinct from that of adults. Knowledge of these differences will be helpful for the clinical diagnosis of 2019-nCoV disease and for a future discussion on age-specific coronavirus infection.

#### ACKNOWLEDGEMENTS

We would like to gratefully thank all the patients, their family members for their selfless participation, and to Xian Eighth Hospital, Xi'an, China, for providing experimental resources. We pay tribute to their outstanding contribution in 2019-nCoV outbreak.

#### CONFLICT OF INTERESTS

The authors declare that there are no conflict of interests.

#### AUTHOR CONTRIBUTIONS

WY and FY designed this study; they conducted the study in a reputed hospital after required permission and collected the relevant clinical information along with XYM and RXX. HYN and FZW drafted the initial manuscript, which was later submitted after subsequent revisions and approval by all the authors. Statistical analysis of the data was done by SLN and WH.

#### DATA AVAILABILITY STATEMENT

The datasets generated during and/or analyzed during the current study are available from the corresponding author on reasonable request.

#### ETHICS APPROVAL AND CONSENT TO PARTICIPATE

The study was reviewed and approved by the ethics committee of The Affiliated Children's Hospital of Xi'an Jiaotong University (No. 20200003). Written informed consents were obtained from all the participants enrolled in the study. An assent was taken from children under 18 years of age while informed consent was provided by their parents or guardians.

#### ORCID

Ying Fang  <http://orcid.org/0000-0002-6335-301X>

## REFERENCES

1. Huang C, Wang Y, Li X, et al. Clinical features of patients infected with 2019 novel coronavirus in Wuhan, China. *The Lancet*. 2020;395(10223):497-506.
2. WHO main website. <https://www.who.int>. (Accessed 29 February 2020).
3. Zhou P, Yang XL, Wang XG, et al. A pneumonia outbreak associated with a new coronavirus of probable bat origin. *Nature*. 2020;579:270-273.
4. Gralinski LE, Menachery VD. Return of the coronavirus 2019-nCoV. *Viruses*. 2020;12(2):135.
5. WHO main website. <https://www.who.int>. (Accessed 5 February 2020).
6. Chinese Center For Disease Control and Prevention main website. <http://www.nhc.gov.cn>. (Accessed 28 February 2020).
7. Zeng LK, Tao XW, Yuan WH, et al. First case of neonate infected with novel coronavirus pneumonia in China. *Chinese J Pediatr*. 2020;58. <https://rs.yiigle.com/yufabiao/1182000.htm>
8. Epidemiology group, New coronavirus pneumonia emergency response mechanism, Chinese CDC. The epidemiological characteristics of an outbreak of 2019 novel coronavirus diseases (COVID-19) in China. *Chin J Epidemiol*. 2020;41(2):145-151.
9. Chen F, Liu ZSh, Zhang FR, et al. Frist case of severe childhood novel coronavirus pneumonia in China. *Chinese J Pediatr*. 2020;58. E005.
10. Yang Y LQ, Liu M, et al. Epidemiological and clinical features of the 2019 novel coronavirus outbreak in China. *MexRxiv preprint* 2020.
11. Diagnosis and Treatment of Pneumonia Caused by 2019-nCoV (version 5). <http://www.nhc.gov.cn/yzygj/s7653p/202002/3b09b894ac9b4204a79db5b8912d4440.shtml>. (Accessed 5 February 2020).
12. Chen Z, Fu J, Shu Q, et al. Diagnosis and treatment recommendations for pediatric respiratory infection caused by the 2019 novel coronavirus. *World J Pediatr*. 2020. <https://doi.org/10.1007/s12519-020-00345-5>
13. Wei M, Yuan J, Liu Y, Fu T, Yu X, Zhang Z. Novel coronavirus infection in hospitalized infants under 1 year of age in China. *JAMA*. 2020; 323(13):1313-1314.
14. Chen N, Zhou M, Dong X, et al. Epidemiological and clinical characteristics of 99 cases of 2019 novel coronavirus pneumonia in Wuhan, China: a descriptive study. *The Lancet*. 2020;395(10223):507-513.
15. Li Q, Guan X, Wu P, et al. Early transmission dynamics in Wuhan, China, of novel coronavirus-infected pneumonia. *New Engl J Med*. 2020;382:1119-1207.
16. Guan W-j, Ni Z-y, et al. Clinical characteristics of 2019 novel coronavirus infection in China. *New Engl J Med*. 2020. <https://doi.org/10.1056/NEJMoa2002032>
17. Shen KL, Yang YH. Diagnosis and treatment of 2019 novel coronavirus infection in children: a pressing issue. *World J Pediatr*. 2020. <https://doi.org/10.1007/s12519-020-00344-6>
18. Fang D, Ma JD, Guan JL, et al. Manifestations of digestive system in hospitalized patients with novel coronavirus pneumonia in Wuhan, China: a single-center, descriptive study. *Chin J Dig*. 2020;40(2020-02-23). <https://rs.yiigle.com/yufabiao/1182632.htm>
19. Zhang H, Kang ZJ, Xu D, et al. The digestive system is a potential route of 2019-nCoV infection: a bioinformatics analysis based on single-cell transcriptomes. *BioRxiv*. 2020. <https://doi.org/10.1101/2020.01.30.927806>
20. Chen H, Xuan B, Yan Y, et al. Profiling ACE2 expression in colon tissue of healthy adults and colorectal cancer patients by single-cell transcriptome analysis. *medRxiv*. 2020. <https://doi.org/10.1101/2020.02.15.20023457>
21. National Recommendations for Diagnosis and Treatment of pneumonia caused by 2019-nCoV (the 4th edition). National Health Commission and National Administrative Office of Chinese Tradition Medicine. [https://www.nhc.gov.cn/xcs/zheng\\_cwj/202001/42945\\_63ed3\\_5b432\\_09b31\\_739bd\\_0785e\\_67/files/7a930\\_91112\\_67475\\_a99d4\\_30696\\_2c8bf\\_78.pdf](https://www.nhc.gov.cn/xcs/zheng_cwj/202001/42945_63ed3_5b432_09b31_739bd_0785e_67/files/7a930_91112_67475_a99d4_30696_2c8bf_78.pdf). (Accessed 29 January 2020).
22. Su B, Wang Y, Zhou R, et al. Efficacy and tolerability of lopinavir/ritonavir- and efavirenz-based initial antiretroviral therapy in HIV-1-infected patients in a tertiary care hospital in Beijing, China. *Front Pharmacol*. 2019;10:1472.
23. Chu CM, Cheng VC, Hung IF, et al. Role of lopinavir/ritonavir in the treatment of SARS: initial virological and clinical findings. *Thorax*. 2004;59(3):252-256.
24. Wilder-Smith A, Freedman DO. Isolation, quarantine, social distancing and community containment: pivotal role for old-style public health measures in the novel coronavirus (2019-nCoV) outbreak. *J Travel Med*. 2020;27(2). <https://doi.org/10.1093/jtm/taaa02>
25. Zhu W, Xie K, Lu H, Xu L, Zhou S, Fang S. Initial clinical features of suspected Coronavirus Disease 2019 in two emergency departments outside of Hubei, China. *J Med Virol*. 2020. <https://doi.org/10.1002/jmv.25763>

**How to cite this article:** Han Y-n, Feng Z-w, Sun L-n, et al. A comparative-descriptive analysis of clinical characteristics in 2019-coronavirus-infected children and adults. *J Med Virol*. 2020;1-7. <https://doi.org/10.1002/jmv.25835>